

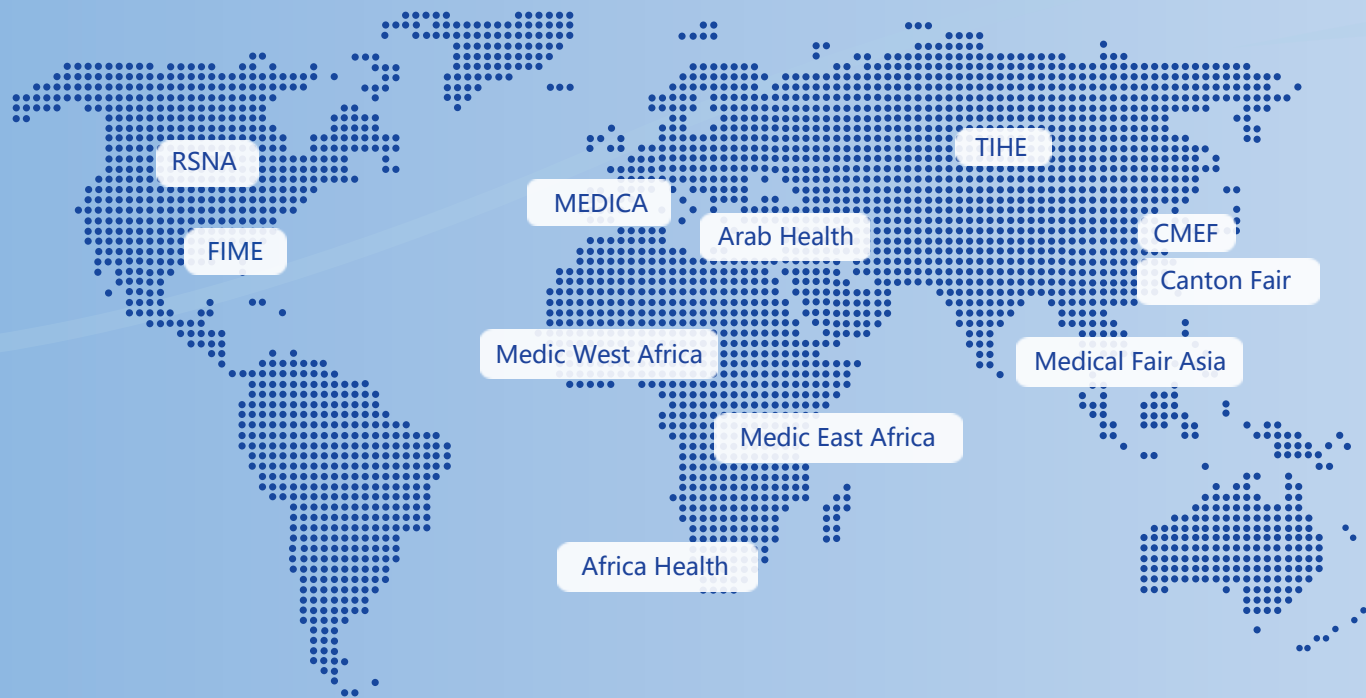
**Nanjing Perlove Medical Equipment Co., Ltd**

Add: No.97, Wangxi Road, Jiangning District, Nanjing 211122  
Tel: +86-25-87187780 +86-25-68571666-9350 9353  
Fax: +86-25-87187780  
Http://www.perlove.com.cn  
E-mail: overseas@perlove.com.cn



**OUR UPCOMING EXHIBITIONS:**

You can see more details on our website  
Http://www.perlove.com.cn



**PERLOVE MEDICAL**

**For Overseas Market:** Nanjing Perlove Medical Equipment Co.,Ltd.  
**For Domestic Market:** Nanjing Perlove Medical Equipment Co.,Ltd.  
Zhuhai Perlead Medical Equipment Co.,Ltd.

# PLX118F

Mobile Digital FPD C-arm System

Version 2.0 Year 2020

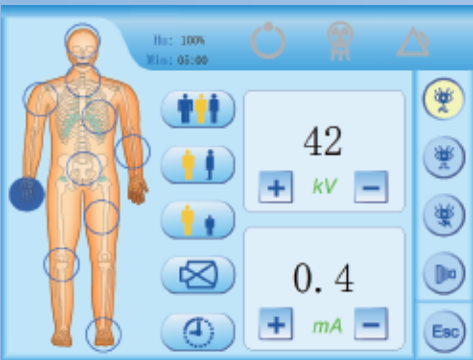


# The state-of-art dynamic flat panel detector

**Larger view**  
**Higher resolution**  
**Lower noise**

# Advanced digital image technology with humanized design

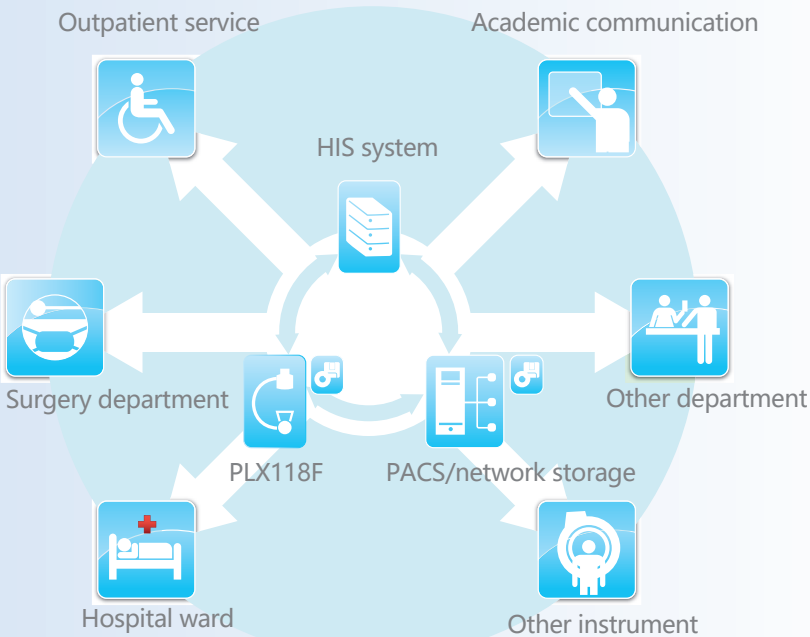
- Hand controller on C-arm stand controls the mechanical and collimator movement, improves your work flow even you are away from the unit.
- RCDP - rapid calculate display platform  
GPU-based dynamic real-time image processing technology makes it easy to get sharp image of various body parts.



## Friendly user interface

Human graphic LCD touch-screen with accurate APR parameters setting realizes convenient operation.

- Seamless connection with cloud PACS system for information sharing and remote diagnosing.
- Remote maintenance.
- Self-diagnosis with error-code displaying.



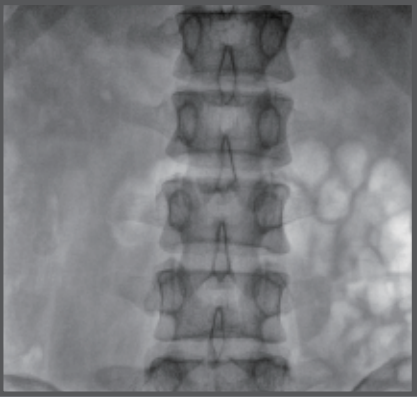
# Lower dose Sharper image.

- Digital pulse mode to ensure lower dose and sharper image.
- Intelligent variable-frequency pulse technology ensures high quality X-ray at efficient dose.

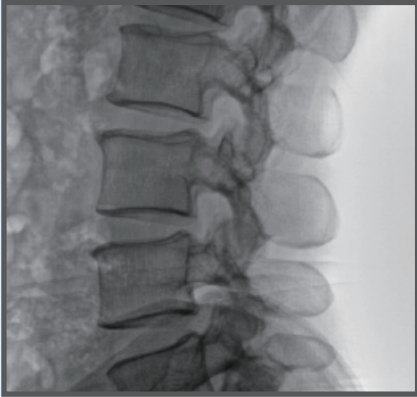
- Perfect digital imaging chain makes the routine operation easily as follow:
  - ✓ Orthopedics department
  - ✓ General surgery
  - ✓ Orthopdic surgery
  - ✓ Traumatology department
  - ✓ Urinary surgery
  - ✓ Spine surgery
  - ✓ Pain surgery
  - ✓ Gastroenterology department
  - ✓ Gynecology
- DSI(Digital Spot Film)
- Red light cross localization



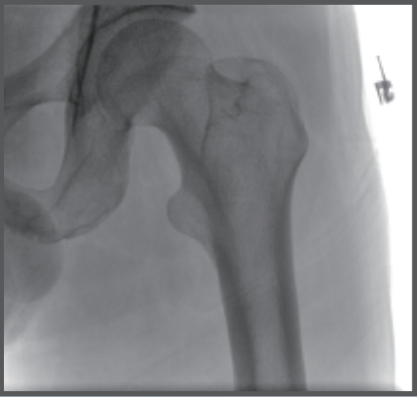
✓ Lumbar fluoroscopy



✓ Lumbar vertebrae fluoroscopy



✓ Pelvis fluoroscopy



✓ Limbs fluoroscopy



High-quality images ensure the accurate diagnosis.



Faster positioning

Higher efficiency

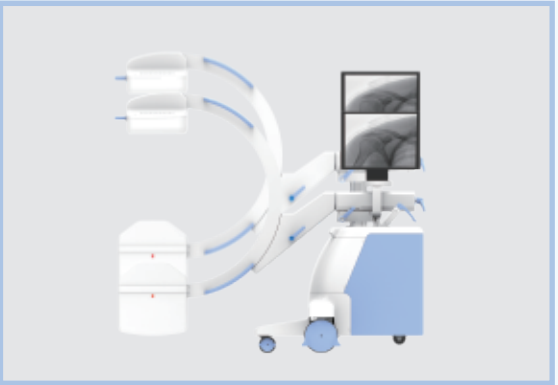
Free rotation without dead space



Unique design of electric auxiliary support arm make the movement of machine more stable.



Convenient and reliable C-arm sliding with counter-balance



Wide range electric elevating meet different operating tables

- Integrated generator with compact C - arm frame suitable for various operating rooms



Large forward, backward and swing movement around axis.

Item	PLX118F
Power Output Inverter Frequency	5kW
	110kHz
Continuous Fluoroscopy Mode (manual & automatic)	Tube Voltage: 40–120kV
	Tube Current: 0.3–4mA
Pulse Fluoroscopy	Tube Voltage: 40–120kV
	Tube Current: 0.3–30mA
	Intelligent variable–frequency technology
Photography Mode	Tube Voltage: 40–120kV
	Tube Current: 25–100mA
	mAs: 1.0mAs–280mAs
Counter balance	